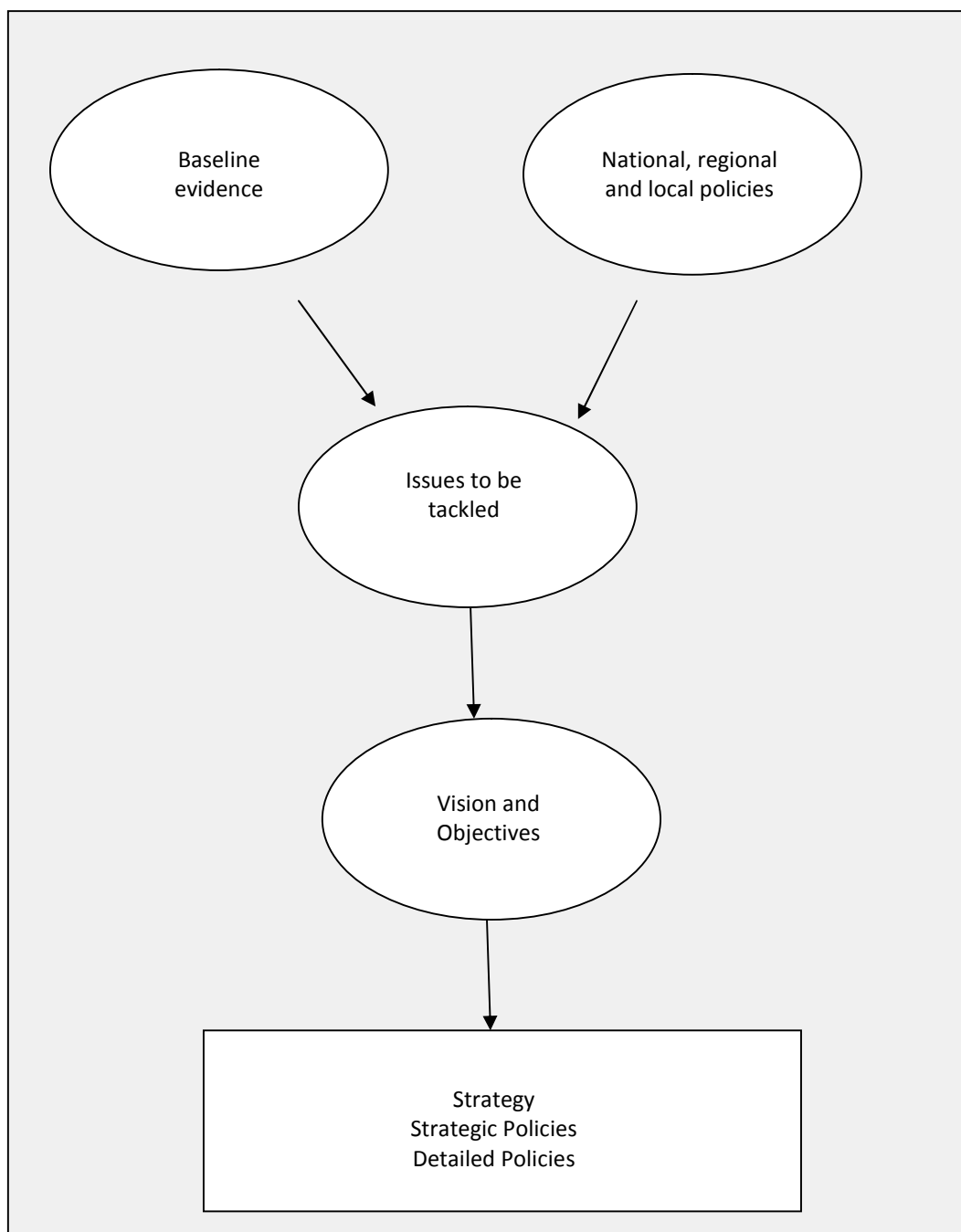


## Vision and strategic objectives

- 4.1 The Plan's vision and strategic objectives were developed on the basis of national, regional and local policies, plans and programmes; and the baseline evidence, which includes the Sustainability Appraisal and the response to public consultation. They provide the basis for Strategic and Detailed Policies set out in Chapter 6 of the Plan.

Figure 2: basis for strategic and detailed policies



## Vision

4.2 The Single Integrated Plan for Anglesey and Gwynedd is the key local strategy for the Plan area. Its vision is:

“Strengthen communities in Gwynedd and Anglesey”

4.3 In order to realise the vision, the Anglesey and Gwynedd Partnership aims to put plans and projects in place that will promote prosperous, healthy and safe communities.

4.4 In Anglesey, the Anglesey Energy Island Programme has identified the following vision in the New Nuclear Build at Wylfa Supplementary Planning Guidance (2017) in order to set the Council’s aspirations for Wylfa Newydd, which is essential to transform the Island’s economy in the future and provide a long term and sustainable quality of life for Anglesey’s residents:

“The New Nuclear Station at Wylfa is a positive driver for the transformation of the economy and communities on Anglesey, providing sustainable employment opportunities, improving the quality of life for the existing and future generations and enhancing local identity and distinctiveness.”

4.5 The Councils consider that the Wylfa Newydd Project provides a unique and unprecedented opportunity for Anglesey and project promoters to work together to contribute to the socio-economic transformation of Anglesey and the wider North Wales region, providing sustainable employment opportunities, improving quality of life for existing and future generations and enhancing local identity and distinctiveness.

4.6 A number of the aims set out in the Single Integrated Plan for Anglesey and Gwynedd and in the vision linked to Wylfa Newydd depend on development and use of land and buildings. Therefore, the Plan has a fundamental role in realising these local aspirations. As a result Plan’s vision for the Plan area by 2026 reflects and develops the Single Integrated Plan and the vision linked to Wylfa Newydd, which is driven by the Anglesey Energy Island Programme.

4.7 This the Vision for the Plan area:

**By 2026, Anglesey and Gwynedd will be recognized for their vibrant and lively communities that celebrate their unique culture, heritage and environment and for being places where people choose to live, work and visit.**

**This means that the Joint Local Development Plan area will be one:**

**which adapts and responds positively to the challenges of climate change**

**where the Welsh language is an integral part of communities**

- **which boasts an appropriately skilled workforce**

- where its residents and businesses are able to grasp new transformational economic opportunities in order to thrive and prosper
- which promotes economic activity amongst young people
- which has a varied, well connected, sustainable and broad economic base that makes the best use of local strengths and opportunities, and where the benefits deriving from the varied economic base are kept local
- which is recognized as a leading location for a variety of renewable and low carbon energy sectors and knowledge based industries, which will have contributed to transforming the local economy, including hosting a new generation nuclear power station, generating low carbon energy and catalysing regeneration in the Plan area
- where the housing needs of local communities in the area are better addressed in terms of supply, type, quality, energy efficiency, location and affordability
- that is home to vibrant networks of inclusive communities where residents enjoy good health and well-being
- where the unique character of its built and cultural heritage, its countryside and landscape, and its environment is valued, protected and enhanced
- a place where the transport infrastructure, particularly Holyhead port and the A487 and A5025 have been developed in order to support and grow businesses locally

The city of Bangor will have retained and strengthened its role as a sub-regional centre, which is home to a variety of residential development, a University and College, business and industrial developments, and heritage, cultural, leisure and commercial opportunities, ensuring that deprivation is reduced. Its retail performance will have improved in order to support its role as a sub-regional shopping centre. It will be taking advantage of its accessibility via the North Wales railway line and the A55

Holyhead will be re-energized to be a confident town, having taken advantage of the port and railway link, its coastal location and comparative proximity to the present Wylfa nuclear power station and the proposed new nuclear power station. It will be a focus for major development leading to a stronger economic base, sufficient and improved choice of housing units, a vibrant town centre and a reduction in the multiple deprivation levels currently seen within the town.

Caernarfon will have improved its function as a place to live and work, ensuring that deprivation is reduced. The town will continue to play a role as an administrative and legal centre. It will be a key tourist destination, building on its coastal location, its wealth of built environment and environmental assets and its railway connection to Snowdonia and Porthmadog. The town will have safeguarded and strengthened its role as a centre for creative arts and a Welsh stronghold

Pwllheli will have developed its role as the main centre for housing, commerce and employment in western Gwynedd. It will have made full use of its location on the coast and proximity to Llŷn AONB. It will be an international destination for sailing and water activities and people will have used the opportunities to develop outdoor activity skills. The town will be more resilient to threats from climate change due to provision of appropriate infrastructure.

Despite the environmental challenges, Porthmadog will continue to be a key centre serving a rural hinterland by offering employment opportunities and a range of services. The town centre will continue to be vibrant and the town will have taken advantage of its multi railway connections. Porthmadog will continue to be an important destination for visitors, using its heritage and environmental assets, including the harbour area and its proximity to the Snowdonia National Park.

Llangefni will have retained and strengthened its role as a town providing homes, jobs and community facilities to its own population and a wider rural population and continue to play a role as an administrative centre. Investment in the town centre will mean there is a better shopping environment. Investment in Bryn Cefni and its expansion and in Grŵp Llandrillo-Menai will have increased the range and variety of jobs available.

Amlwch will have improved its role as a key centre in the North of the Island for housing, commerce and employment opportunities to support the nearby new nuclear power station at Wylfa. Investment in its town centre will mean that it will have an improved shopping environment. Investment in the Copper Kingdom heritage between Amlwch and Parys Mountain will have improved its role as a visitor destination.

Blaenau Ffestiniog will be a good place to live, work in and visit. It will be well known for culture and art, strong community feeling and stunning landscape. The town's businesses will be maintained and supported. It will be a quality centre for visitors, using its unique characteristics, including its proximity to the Snowdonia National Park, local outdoor activity opportunities and the rich slate heritage.

The rural areas around the Sub-regional Centre and the Urban Service Centres will be a network of flourishing, sustainable communities. The Local Service Centres will have good links with the Urban Service Centres or the Sub-regional Centre. They will provide a range of local services and facilities for the rural communities around them. They will have received an appropriate level of additional housing units and employment opportunities to assist in maintaining community services and facilities.

Villages and clusters will be within convenient reach of the Sub-regional Centre, Urban Service Centres or the Local Service Centres. There will be more affordable housing and housing to meet the needs of the local communities, and rural economic development to strengthen and diversify the rural economy, whilst respecting the natural environment.

### **The Strategic Objectives**

- 4.8 The Plan will realise its vision through a series of strategic objectives that provide the context for Strategic Policies and Detailed Policies, which are either overarching ones, relevant to specific land uses or are relevant to specific areas or sites.
- 4.9 These are the Plan's strategic objectives:

**Theme 1: Support and create safe, healthy, distinctive and vibrant communities**

SO1 Safeguard and strengthen the Welsh language and culture and promote its use as an essential part of community life.

SO2 Ensure that the appropriate physical or community infrastructure is in place e.g. water supply, health facilities, schools, community facilities, or that it can be provided (e.g. by means of developer contributions) to cope with every kind of development.

SO3 Improve and maintain safe, efficient, high quality, modern and integrated transport networks to employment, services and education/ training facilities particularly by foot, bicycle and public transport, thus reducing where possible the number of journeys in private cars.

SO4 Maximise the opportunities of Holyhead as a major international gateway and the A55, E22 Trans European network route and the A5025, A487, A470 as key transportation corridors:

**Key outputs:**

- The Plan's strategy and policies will have contributed to creating more communities with over 70% of Welsh speakers;
- No community infrastructure will have been lost unless evidence has shown it was not critical to the community;
- Development will be located in order to provide opportunities for people to undertake the full journey to work or part of it on foot, by bicycle or on buses and trains;
- New roads or essential improvements to roads on the present road network will have been provided.

**Theme 2: Sustainable Living**

SO5 Ensuring that development in the Plan area supports the principles of sustainable development and creates sustainable communities whilst respecting the varied role and character of the centres, villages and countryside

SO6 Minimize, adapt and mitigate the impacts of climate change. This will be achieved by:

- ensuring that highly vulnerable development is directed away from areas of flood risk wherever possible;
- reduce the need for energy and other resources in developments;
- promote renewable and low carbon energy production within the area;
- make use of suitable previously developed land and unoccupied buildings or ones that are not used to their full capacity, where available;
- manage, protect and enhance the quality and quantity of the water

environment and reduce water consumption.

SO7 Ensure that all new development meets high standards in terms of quality of design, energy efficiency, safety, security (persons and property) and accessibility, relates well to existing development, enhances public realm and develops locally distinctive quality places.

SO8 Ensure that settlements are sustainable, accessible and meet all the needs of their communities in accordance with their role in the settlement hierarchy:

**Key outputs:**

- the local contribution to climate change will have been reduced, due to energy efficiency and greater use of renewable energy;
- new developments that are vulnerable to harm will not be located in areas at risk from flooding;
- development will have made the best use of previously developed land, suitable vacant buildings or buildings not being fully utilized.

**Theme 3: Support growth and regeneration that will transform the local economy under the umbrella of Anglesey Energy Island Programme and other strategies and plans, building on those elements of its unique economic profile that are identified as being of regional and national significance**

SO9 Support and capitalise on the development of the Wylfa Newydd Project and associated development to maximise socio-economic opportunities for local business and sustainable employment opportunities for local people, including facilitating a suitable network of Wylfa Newydd Project-related associated development sites while ensuring that adverse effects of the Wylfa Newydd Project on the local communities are appropriately avoided, or mitigated and where appropriate legacy benefits are provided.

SO10 Ensure that a network of employment sites and premises of a size and quality is safeguarded and allocated in sustainable locations that best meet the needs of existing businesses and are able to support the growing sectors of the local economy, attracting investment, and retaining and increasing the number of indigenous jobs.

SO11 Secure opportunities to improve the workforce's skills and education.

SO12 Diversify the Plan area's rural economy, building on opportunities, offering local employment opportunities with good quality jobs that are suitable for the local community and respects environmental interests.

SO13 Promote vital and vibrant town centres in Amlwch, Bangor, Blaenau Ffestiniog,

Holyhead, Caernarfon, Llangefni, Porthmadog and Pwllheli, that have either maintained or rediscovered their purpose as centres for work and services, and that are vibrant and attractive places for residents and visitors.

SO14 Manage the area as an alternative and sustainable destination for tourists by providing facilities of a high standard that meet modern day needs and offer benefits throughout the year:

**Key outputs:**

- plots of land on the prime employment sites will have been protected from alternative land uses;
- there will be more work opportunities locally in higher wage sectors;
- employment and economic activity rates will have increased and unemployment reduced and will be closer to the national average;
- vacancies in town centres will be lower than they were in 2011;
- plans to modernize and reduce unused spaces in schools and the modernization of other education establishments will have led to better and wider opportunities for education and to develop skills locally;
- there will be infrastructure and vibrant and attractive destinations for visitors and local people and a higher standard of accommodation for visitors.

**Theme 4: To give everyone access to a home appropriate to their needs**

SO15 To ensure that a sufficient and appropriate range of housing sites are available in sustainable locations in accordance with the settlement hierarchy to support economic growth.

SO16 To provide a mixture of good quality and affordable housing units, of a range of types and tenures to meet the housing requirements of all sections of the population:

**Key outputs:**

- there will be a consistent minimum 5 year supply of land for housing;
- housing growth will be distributed across the Plan area in accordance with the spatial distribution;
- the supply of affordable housing units will have increased;
- the demand for sites for Gypsies and Travellers will have been addressed.

**Theme 5: Protect and enhance the natural and built environment**

SO17 Protect, enhance and manage the natural and heritage assets of the Plan area, including its natural resources, wildlife habitats, and its landscape character

	and historic environment
SO18	Encourage waste management based on the hierarchy of reduce, re-use, recovery and safe disposal.
SO19	Meet the needs of minerals locally and regionally in a sustainable manner:
	<b>Key outputs:</b>
	<ul style="list-style-type: none"> <li>• developments given permission in Conservation Areas will have maintained or improved their historic character;</li> <li>• no Scheduled Ancient Monument will have been lost due to development;</li> <li>• no development given planning permission will have resulted in a loss of a site of international or national nature conservation value or damage to any of their features;</li> <li>• Development permitted within or adjacent current or future World Heritage Sites will have maintained or improved their historical character.</li> </ul>

Table 3: Link between the objectives, policies and monitoring indicators

Objectives	Policies	Monitoring indicators
<b>Theme 1: Support and create safe, healthy, distinctive and vibrant communities</b>		
SO1	PS 1	D1, D2, D3, D4
SO2	ISA 1, ISA 2, ISA 4, ISA 5,	D5, D6, D7, D8, D9, D10
SO3 & SO4	TRA 1, TRA 2, TRA 3, TRA 4	D11, D12, D13, D14, D15
<b>Theme 2: Sustainable living</b>		
SO5 SO6	PS 5, PS 6, PCYFF 1, PCYFF 2, ADN 1, ADN 2, ADN 3	D16, D17, D18, D19, D20, D21, D22, D23
SO7	PCYFF 2, PCYFF 3, PCYFF 4	D24
SO8	PS 17	D25
<b>Theme 3: Support growth and regeneration that will transform the local economy under the umbrella of Anglesey Energy Island Programme and other strategies and plans, building on those elements of its unique economic profile that are identified as being of regional and national significance (economy and regeneration)</b>		
SO9	PS 8, PS 9, PS 10, PS 11, PS 12	D26, D27, D28, D29, D30
SO10	CYF 1	D31, D32, D33, D34,
SO11	PS 9, ISA 3	D35, D36
SO12	CYF 6	D37
SO13	MAN 1, MAN 2, MAN 3	D38, D39, D40
SO14	PS 14, TWR 1, TWR 2, TWR 3, TWR 5	D41, D42
<b>Theme 4: To give everyone access to a home appropriate to their needs (supply and quality of housing)</b>		
SO15	PS 16, TAI 1, TAI 2, TAI 3, TAI 4, TAI 5, TAI 6, TAI 7	D43, D44, D45, D46
SO16	PS 18, TAI 5, TAI 8, TAI 15, TAI 16, TAI 17, TAI 18, TAI 19	D47, D48, D49, D50, D51,



		D52, D53, D54, D55, D56, D57, D58
<b>Theme 5: Protect and enhance the natural and built environment (natural and built environment)</b>		
SO17	PS 19, AMG1, AMG 2, AMG 3, AMG 4, AMG 5, AMG 6, PS 20, AT 1, AT 3, AT 4	D59, D60, D61, D62, D63
SO18	GWA 1	D64, D65
SO19	PS 22, MWYN 6	D66, D67, D68